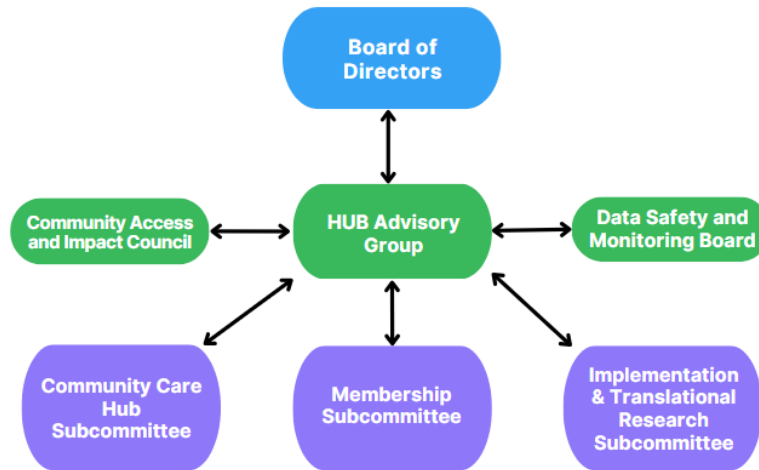


Iowa Community HUB Organizational Chart



Board of Directors

- Strategy development around financial acumen
- Development of strategic action plans
- Ongoing evaluation of liability risk
- Assess data governance through coordinated data security

Board of Director meetings occur the 4th Fridays of every other month at 12:00 PM.

HUB Advisory Group

- Provide the stage for communities, health care organizations and states to work together to build a strong social care ecosystem.
- Gather feedback from a diversity of voices to inform statewide SDOH efforts.
- Foster cross-sector collaborations
- Support integration of social care into the health care continuum

Meetings take place on the 4th Friday of every other month at 9:00 AM.

Subcommittees

1. Community Care HUB

- Ensure equitable access to health-related social needs services by advancing the CHW role.
- Align with the Iowa CHW Alliance Strategic Plan and foster cross-sector partnerships and projects.
- Enable person-centered, care coordination through sophisticated clinic-community linkages
- Support and inspire innovative payment models.

Meetings take place on the 1st Wednesday of every other month at 2:00 PM.

2. Membership Subcommittee

- Support community-based organizations through membership
- This group works as an “open office hours” giving time to connect with delivery organizations to share their successes, challenges, questions, and best practices.



Meetings take place monthly on the 2nd Wednesday of the month at 9:00 AM.

3. Implementation and Translational Research – Led by ISU U-TuRN

- Facilitate collaborative grant writing efforts
- Promote quality assurance - continuous performance improvement
- Develop best practices for training and implementation
- Create standardized processes for delivery and evaluation

Meetings take place on the 4th Friday of every other month at 9:00 AM (alternating with Hub Advisory Group)

4. Data Safety and Monitoring Board

- Ensure the safety of research participants and the integrity of study data.
- Monitor progress, efficacy, safety, and other confidential data from grant projects affiliated with the HUB.

Meetings occur annually. The Board may decide to meet more often if a project presents higher risk to the subjects, the population is vulnerable, or when there is a large volume of data to review. The Chairman may also call an ad hoc meeting depending on safety or efficacy concerns.

5. Community Access and Impact Council

- **Center Lived Experience:** Capture and integrate diverse lived experiences and perspectives into the HUB's decision-making processes to ensure these voices are at the forefront of operations.
- **Drive Decision-Making:** Incorporate lived experience insights to inform and shape the HUB's strategies and actions, ensuring they align with the needs of the community.
- **Enhance Understanding:** Continuously deepen the HUB and its partner network's understanding of diverse lived experiences, especially those of underserved populations, to enhance program delivery and services.
- **Foster Inclusion:** Cultivate welcoming and inclusive environments within the programs and services of the HUB and its partner network, ensuring that all Iowans feel valued and have access to health and wellness resources.
- **Strengthen Capacity:** Support skill-building and training for program delivery organizations and healthcare system partners to provide culturally appropriate, inclusive, and accessible care/ programs for all Iowans.

Meetings take place quarterly on the 3rd Friday from 8:00 AM.