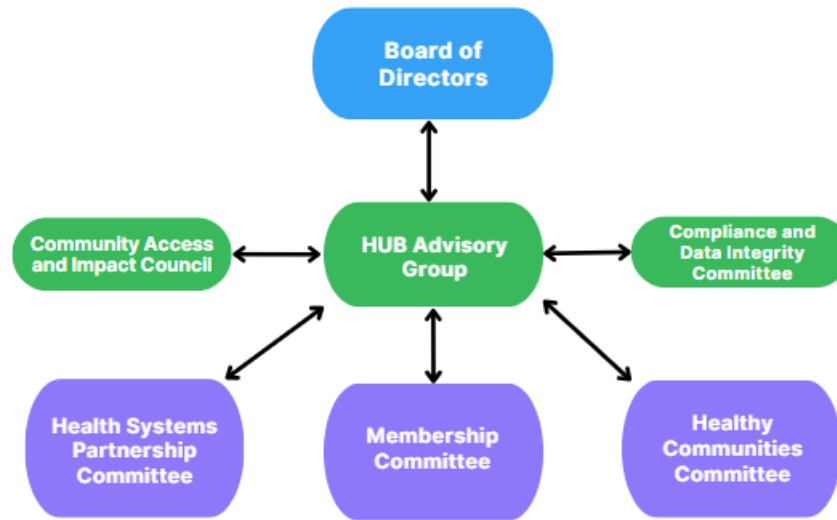




# Iowa Community HUB Organizational Chart



## Board of Directors

- Strategy development around financial acumen
- Development of annual strategic action plan
- Create and change policies for the HUB
- Ensure strong data governance and coordinated data security standards

Board of Director meetings occur the 4<sup>th</sup> Fridays of every other month at 12:00 PM.

## HUB Advisory Group

- The Group provides the stage for health care organizations, public health agencies, academia, and community-based organizations to work together to build a strong social care ecosystem.
- Fosters cross-sector partnerships to improve coordination between health and social services
- Supports integration of social care into the broader healthcare continuum
- Promotes shared learning, best practices, and sustainable community-clinical linkages

Meetings are held quarterly on the fourth Friday of the month at 9:00 AM.

## Committees

### 1. Health Systems Partnership Committee

- Strengthen health system partnerships by advising strategies to raise awareness and adoption of HUB services, improve screening, and enhance clinic–community communication.
- Promote program and service awareness by guiding training, resources, and outreach to connect patients to prevention and management programs.
- Support referral pathways and data sharing by advising on efficient referral systems and secure interoperability.
- Include those with lived experience to ensure care is connected and community-focused.

Meetings take place quarterly; TBD

## **2. Membership Committee**

- Support community-based organizations through membership
- This group works as an “open office hours” giving time to connect with delivery organizations to share their successes, challenges, questions, and best practices.
- Facilitate networking and collaboration among community organizations to strengthen partnerships and program impact.

Meetings take place monthly on the 2nd Wednesday of the month at 9:00 AM.

## **3. Healthy Communities Committee**

- Expand community-based prevention efforts, including health screenings, outreach, and education to identify individuals at risk
- Engage communities in evidence-based prevention and chronic disease management programs
- Support partners in expanding local programs, services, and referral pathways
- Ensure access to health-related social needs services by advancing CHWs and other non-traditional navigator roles
- Align with the Iowa CHW Alliance Strategic Plan and foster cross-sector partnerships and projects
- Enable person-centered care coordination through strong clinic–community linkages

Meetings are held quarterly on the 2<sup>nd</sup> Wednesday at 2:00 PM.

## **4. Compliance and Data Integrity Committee**

- Ensures that the Iowa Community HUB operates in full compliance with applicable federal, state, and local regulations.
- The Committee provides oversight and guidance on policies, procedures, and practices that promote transparency, accountability, and trust among participants, clients, and partners.
- Adheres to ethical standards and maintains integrity, accuracy, security, and appropriate use of data collected, shared, or exchanged through the HUB’s systems and partnerships.

The Committee shall meet twice annually and more frequently as needed to address compliance or data issues.

## **5. Community Access and Impact Council**

- Center Lived Experience: Capture and integrate diverse lived experiences and perspectives into the HUB's decision-making processes to ensure these voices are at the forefront of operations.
- Drive Decision-Making: Incorporate lived experience insights to inform and shape the HUB’s strategies and actions, ensuring they align with the needs of the community.
- Foster Inclusion: Cultivate welcoming and inclusive environments within the programs and services of the HUB and its partner network, ensuring that all Iowans feel valued and have access to health and wellness resources.
- Strengthen Capacity: Support skill-building and training for program delivery organizations and healthcare system partners to provide culturally appropriate, inclusive, and accessible care/ programs for all Iowans.

Meetings take place quarterly on the 3<sup>rd</sup> Friday from 8:00 AM.