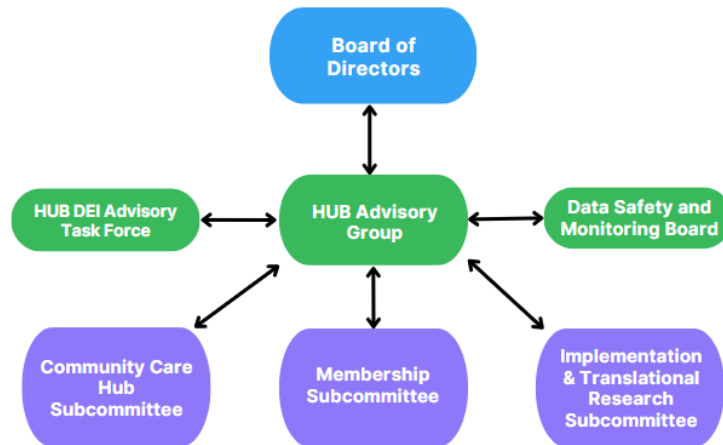




Iowa Community HUB Organizational Chart



Board of Directors

- Defining function
- Fostering strategy development
- Clarifying operation plans
- Evaluating and minimizing liability risk
- Developing data governance

Board of Director meetings occur the 4th Fridays of every other month at 12:00 PM.

HUB Advisory Group

- Large Group learning forum
- Gathering input/feedback/support

Meetings take place on the 4th Friday of every other month at 9:00 AM.

Subcommittees

1. Community Care HUB

- Create a role for the HUB in Medicaid transformation initiatives and value-based payment models
- Ensure equitable access to health-related social needs services by advancing the CHW role
- Enable person-centered, care coordination through sophisticated clinical community linkages
- Enhance data integration and interoperability through coordinated data security governance

Meetings take place on the 1st Wednesday of every other month at 2:00 PM.

2. Membership and HUB Business Development

- Supporting community-based organizations through membership
- Single contracting entity
- Developing procedures for billing and payments
- Refining value proposition

Meetings take place on the 4th Monday of every other month at 2:30 PM.

3. Implementation and Translational Research – Led by ISU U-TuRN

- Facilitating collaborative grant writing efforts
- Promoting quality assurance - continuous performance improvement



- Developing best practices for training and implementation
- Creating standardized processes for delivery and evaluation

Meetings take place on the 4th Friday of every other month at 9:00 AM (alternating with Hub Advisory Group)

4. Data Safety and Monitoring Board

- Ensure the safety of research participants and the integrity of study data.
- Monitor progress, efficacy, safety, and other confidential data from grant projects affiliated with the HUB.

Meetings occur annually. The Board may decide to meet more often if a project presents higher risk to the subjects, the population is vulnerable, or when there is a large volume of data to review. The Chairman may also call an ad hoc meeting depending on safety or efficacy concerns.

5. HUB DEI Advisory Task Force

- Grow our understanding of the lived experience of diverse perspectives.
- Ensure the HUB meets its values of community engagement and inclusion, health equity, and sustainability to advance health initiatives.
- Utilize lived experience perspectives to drive HUB decisions and operations.
- Cultivate a welcoming and inclusive community.
- Ensure skill building for program delivery organizations and health care systems in providing culturally appropriate and inclusive care for all Iowans.

Meetings take place on a quarterly basis.