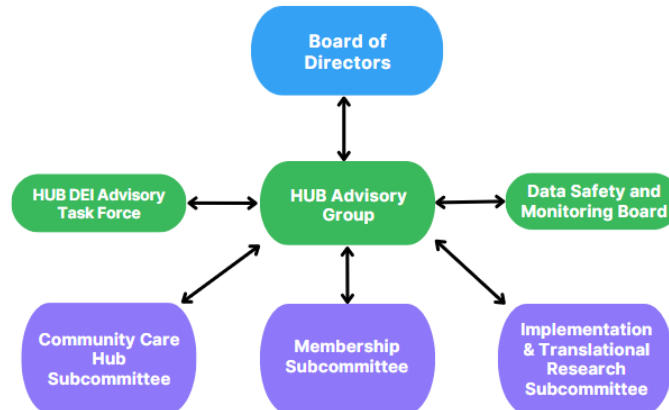




Iowa Community HUB Organizational Chart



Board of Directors

- Strategy development around financial acumen
- Development of strategic action plans
- Ongoing evaluation of liability risk
- Assess data governance through coordinated data security

Board of Director meetings occur the 4th Fridays of every other month at 12:00 PM.

HUB Advisory Group

- Provides the stage for communities, health care organizations and states to work together to build a strong social care ecosystem.
- Gather feedback from a diversity of voices to inform statewide SDOH efforts.
- Foster cross-sector collaborations
- Support integration of social care into the health care continuum

Meetings take place on the 4th Friday of every other month at 9:00 AM.

Subcommittees

1. Community Care HUB

- Create a role for the HUB in Medicaid transformation initiatives and value-based payment models.
- Ensure equitable access to health-related social needs services by advancing the CHW role.
- Enable person-centered, care coordination through sophisticated clinical-community linkages
- Support and inspire innovative payment models.
- Enhance data integration and interoperability among network partners

Meetings take place on the 1st Wednesday of every other month at 2:00 PM.

2. Membership Subcommittee

- Support community-based organizations through membership
- This group works as an “open office hours” giving time to connect with delivery organizations to share their successes, challenges, questions, and best practices.

Meetings take place monthly on the 2nd Wednesday of the month at 9:00 AM.



3. Implementation and Translational Research – Led by ISU U-TuRN

- Facilitating collaborative grant writing efforts
- Promoting quality assurance - continuous performance improvement
- Developing best practices for training and implementation
- Creating standardized processes for delivery and evaluation

Meetings take place on the 4th Friday of every other month at 9:00 AM (alternating with Hub Advisory Group)

4. Data Safety and Monitoring Board

- Ensure the safety of research participants and the integrity of study data.
- Monitor progress, efficacy, safety, and other confidential data from grant projects affiliated with the HUB.

Meetings occur annually. The Board may decide to meet more often if a project presents higher risk to the subjects, the population is vulnerable, or when there is a large volume of data to review. The Chairman may also call an ad hoc meeting depending on safety or efficacy concerns.

5. HUB DEI Advisory Task Force

- Grow our understanding of the lived experience of diverse perspectives.
- Ensure the HUB meets its values of community engagement and inclusion, health equity, and sustainability to advance health initiatives.
- Utilize lived experience perspectives to drive HUB decisions and operations.
- Cultivate a welcoming and inclusive community.
- Ensure skill building for program delivery organizations and health care systems in providing culturally appropriate and inclusive care for all Iowans.

Meetings take place on a quarterly basis.